

CERTIFICATE OF FOURTH AMENDMENT OF THE
DECLARATION OF CONDOMINIUM OF
HIGH POINTE RESORT, A CONDOMINIUM

WHEREAS, the Declaration of Condominium of High Pointe Resort, a Condominium, is dated September 19, 1996, recorded in Official Records Book 1516, Page 1, et seq., of the public records of Walton County, Florida (the "Declaration") amended by that Certificate of Amendment of the Declaration dated November 21, 1996, recorded in Official Records Book 1553, Page 131, et seq., public records of Walton County, Florida, amended by that Second Certificate of Amendment of the Declaration dated February 28, 1997, recorded in Official Records Book 1614, Page 150, et seq., public records of Walton County, Florida, and amended by that Third Certificate of Amendment of the Declaration dated June 12, 1997, recorded in Official Records Book 1670, Page 28, et seq., public records of Walton County, Florida; and

WHEREAS, pursuant to provisions of the Declaration, as amended, and Chapter 718.104(4)(e) Florida Statutes, High Point Beach, Inc., a Florida corporation, the developer of the above described condominium ("High Point Beach"), hereby makes this Amendment to the Declaration, as amended, in order to accurately reflect that Building 1 and its related improvements, in addition to Building 4, the Commercial Food Service Building, Building 5, Building 3 and Building 2 and their related improvements, are substantially complete.

NOW, THEREFORE, High Point Beach hereby amends the Declaration, as amended, as follows:

Paragraph 3-A of the Declaration of Condominium of High Pointe Resort, a Condominium, is hereby amended so as to include the Fourth Amended Surveyor's Certificate and the survey and graphic description of improvements attached to such certificate, all being attached hereto and made a part hereof as Exhibit A, which reflects that Building 1 is substantially complete as described therein.

Fourth Amendment to Declaration - 1

FILED AND RECORDED
DATE 10/02/97 TIME 14:20

FL 559997 B 1716 P 41
CO:WALTON ST:FL

DAN BODIFORD
CO:WALTON

CLERK
ST:FL

IN WITNESS WHEREOF, High Point Beach has caused this Certificate of Fourth Amendment of the Declaration, as amended, to be executed on this 30th day of September, 1997.

Signed, sealed and delivered in the presence of:

HIGH POINT BEACH, INC., a Florida corporation

Elizabeth J. Walters

By: *Wesley L. Burnham, Jr.*
Wesley L. Burnham, Jr.
Its: Vice President

ELIZABETH J. WALTERS
Printed Name of Witness

Sharon Robertson

SHARON ROBERTSON

Printed Name of Witness

STATE OF FLORIDA
COUNTY OF Bay

The foregoing instrument was acknowledged before me this 30th day of September, 1997, by Wesley L. Burnham, Jr., Vice President of High Point Beach, Inc., a Florida corporation, on behalf of the corporation. He is personally known to me or has produced a Florida Driver's License as identification.

My Commission Expires:

Sharon Robertson

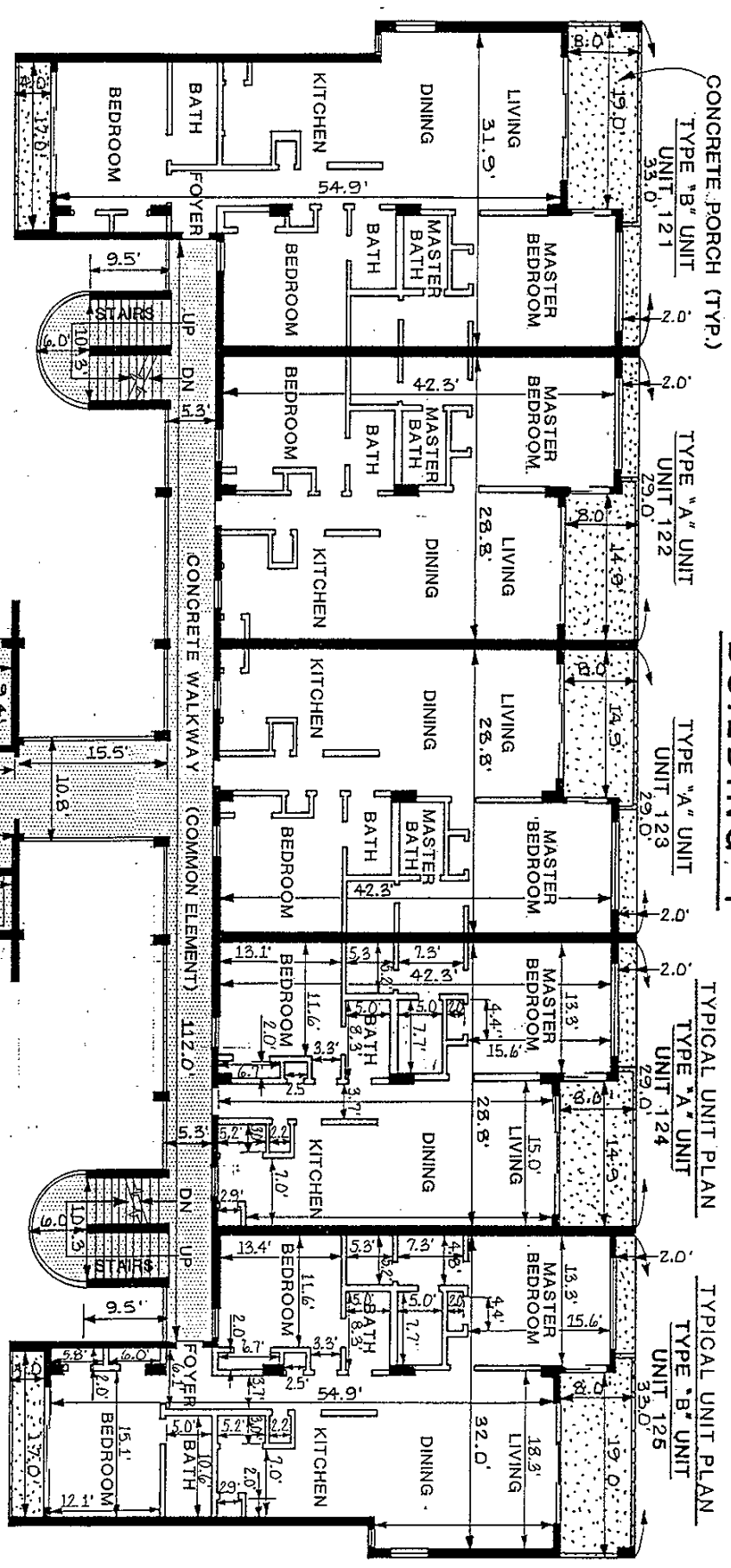
Notary Public



Printed Name: **SHARON ROBERTSON**
NOTARY PUBLIC-FLORIDA
Commission # **CC590296**
EXPIRES **1/17/01**
(Notary Seal)

FL 559997 B 1716 P 42
CO:WALTON ST:FL

FOURTH AMENDED PLAT OF HIGH POINTE RESORT A CONDOMINIUM BUILDING 1



TYPICAL UNIT PLAN
TYPE "A" UNIT
UNIT 121

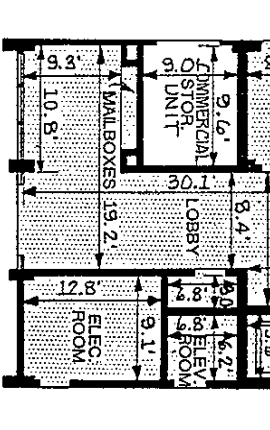
TYPICAL UNIT PLAN
TYPE "A" UNIT
UNIT 122

TYPICAL UNIT PLAN
TYPE "A" UNIT
UNIT 123

TYPICAL UNIT PLAN
TYPE "A" UNIT
UNIT 124

TYPICAL UNIT PLAN
TYPE "A" UNIT
UNIT 125

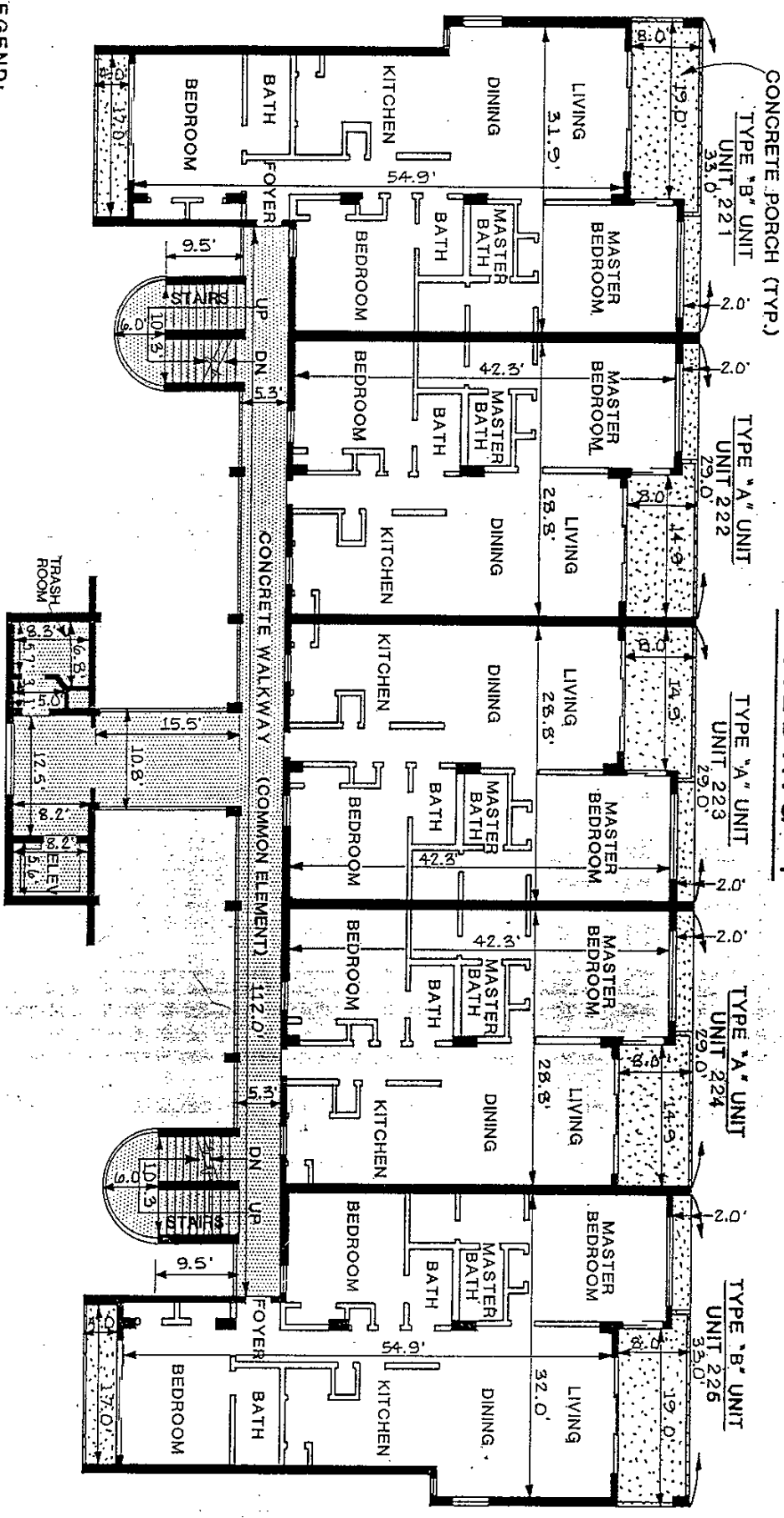
GROUND FLOOR PLAN
F.F.E.: 33.90'



- LEGEND:**
- DENOTES CONDOMINIUM BOUNDARY
 - DENOTES COMMON ELEMENT
 - DENOTES FINISHED FLOOR ELEVATION
 - DENOTES ELEVATOR
 - DN DENOTES DOWN
 - (TYP.) DENOTES TYPICAL
 - ELEC. DENOTES ELECTRIC
 - STOR. DENOTES STORAGE

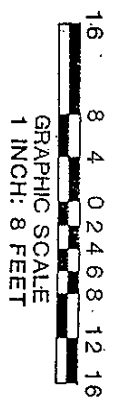
NOTE: UNIT DIMENSIONS SHOWN HEREON MAY VARY 0.10%.

FOURTH AMENDED PLAT OF HIGH POINTE RESORT A CONDOMINIUM BUILDING 1



- LEGEND:**
- DENOTES CONDOMINIUM BOUNDARY
 - ▨ DENOTES COMMON ELEMENT
 - F.F.E.: DENOTES FINISHED FLOOR ELEVATION
 - ELEV. DENOTES ELEVATOR
 - DN DENOTES DOWN
 - (TYP.) DENOTES TYPICAL

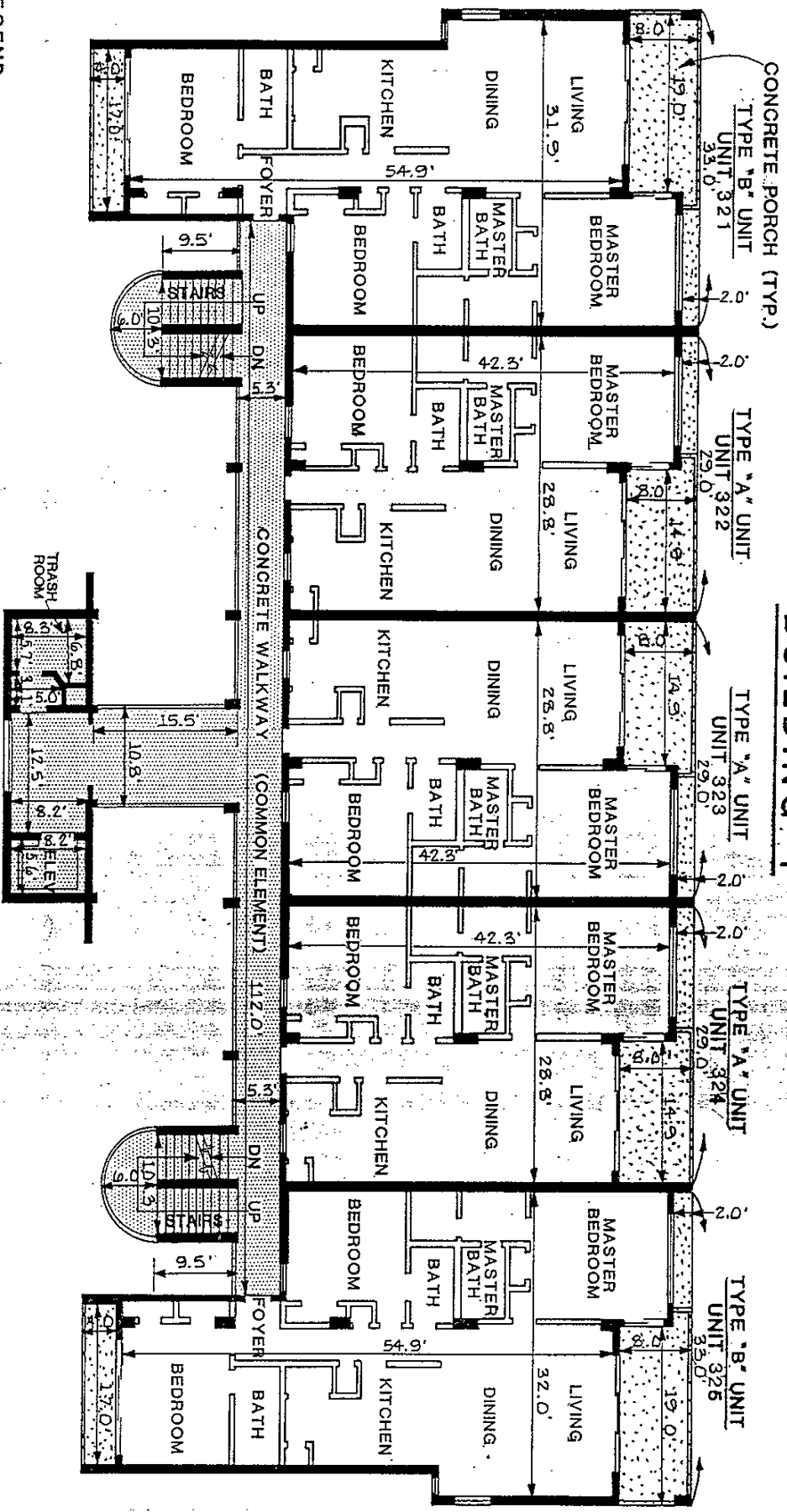
SECOND FLOOR PLAN
F.F.E.: 43.73'



NOTE: UNIT DIMENSIONS SHOWN HEREON MAY VARY 0.10%

SHEET 3 OF 5

FOURTH AMENDED PLAT OF HIGH POINTE RESORT A CONDOMINIUM BUILDING 1

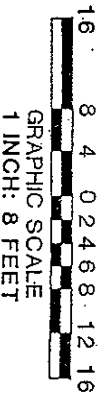


LEGEND:

- DENOTES: CONDOMINIUM BOUNDARY
- DENOTES COMMON ELEMENT
- F.F.E.: DENOTES FINISHED FLOOR ELEVATION
- ELEV. DENOTES ELEVATOR
- DN DENOTES DOWN
- UP DENOTES UP
- (TYP.) DENOTES TYPICAL

THIRD FLOOR PLAN

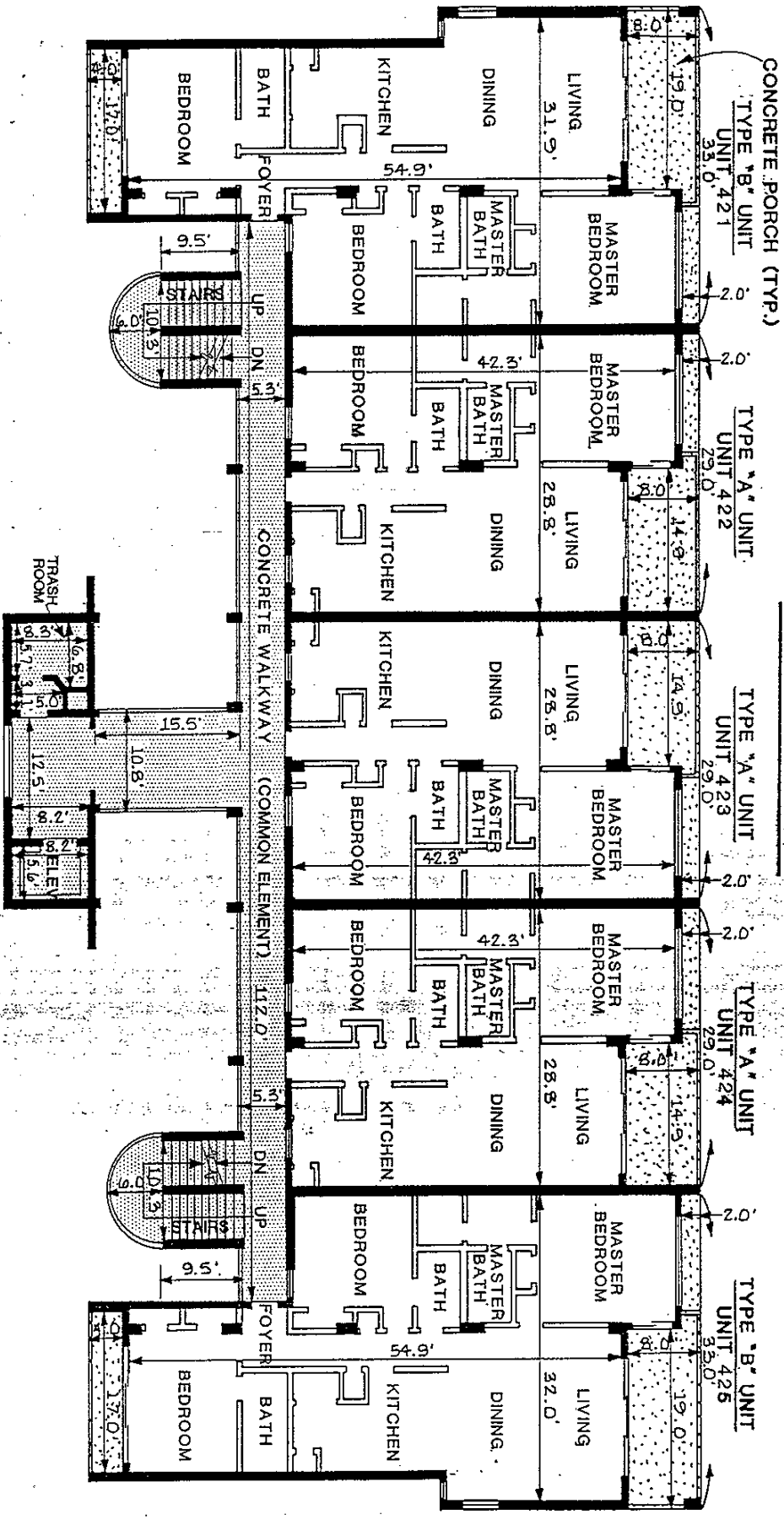
F.F.E.: 53.35'



NOTE: UNIT DIMENSIONS SHOWN HEREON MAY VARY 0.10"

SHEET 4 OF 5

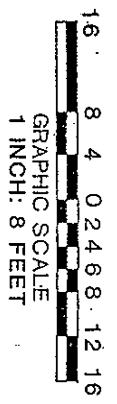
FOURTH AMENDED PLAT OF HIGH POINTE RESORT A CONDOMINIUM BUILDING 1



- LEGEND:**
- DENOTES: CONDOMINIUM BOUNDARY
 - DENOTES COMMON ELEMENT
 - F.F.E.: DENOTES FINISHED FLOOR ELEVATION
 - ELEV. DENOTES ELEVATOR
 - DN DENOTES DOWN
 - (TYP.) DENOTES TYPICAL

FOURTH FLOOR PLAN

F.F.E.: 63.05'



NOTE: UNIT DIMENSIONS SHOWN HEREON MAY VARY 0.10%